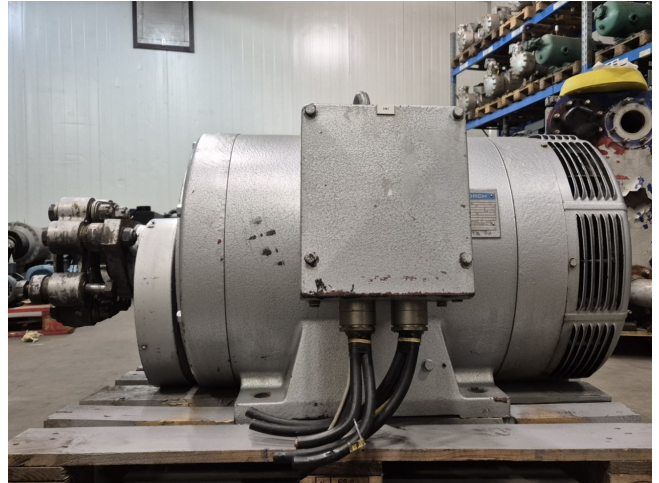


# Schorch KN5315M-CB011Z

## Specifications

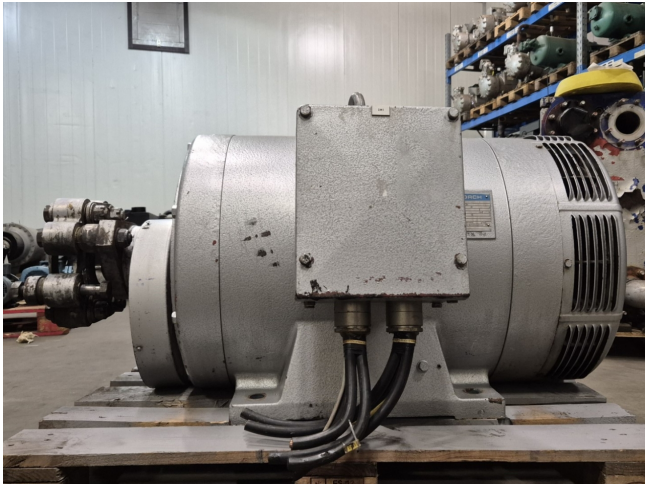
Marka	Schorch
Rodzaj	KN5315M-CB011Z
kW	132
RPM	985
Size & Weight	1340x860x760 mm (LxWxH) &
50 Hz / 60 Hz	50 Hz
Stock	1



## Description

### Used Schorch KN5315M-CB011Z

Used Schorch KN5315M-CB011 Z electric motor with the following specifications: 50 Hz - 132 kW - 985 RPM.



SCHORCH					
3~	Mot	Typ	KN 5315M-CB011 Z		
DIN-Baugr. 315 M		IP 23	Nr. 47022201 / 1		
380		V	245 A		
132		kW cos φ 0,87			
		985		/min	50 Hz
		V		A	
Isol.-Kl. 3		t			
Je Lager nach 6000		Betriebsst.		45 g Fett	
Sortenempfehlung siehe Betriebsanweisung					
Fettsorte :					
MADE IN GERMANY					



